

Permanent staff



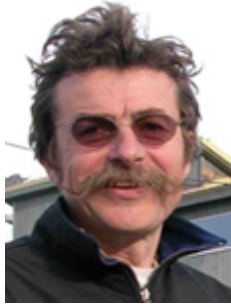
Philipp Heeb: Head, Researcher



Patricia Beldade: Researcher
Eco-evo-devo, phenotypic plasticity, genetics of adaptation
Experimental approaches
Fruit flies, butterflies



Pierrick Blanchard: Lecturer
Prey behavior, Sex allocation
Experimental & observational approaches
Ungulates, seabirds



Etienne Danchin: Researcher
Nongenetic inheritance, Animal Culture, epigenetic inheritance
Experimental approach
Fruit flies, fish, pea Aphids



Joël White: Co-head, Lecturer
Host-microbiota interactions, mating behav.
Field and experimental techniques, bacterial metabarcoding
Birds (lizards, fish, insects)



Julien Cote: Co-head, Researcher
Spatial ecology, behaviour, global change
Population monitoring, behavioral tests
Lizards, fish, dragonfly



Emmanuelle Cam: Professor
Demography, Life history evolution
Longitudinal data, capture-mark-recapture
Birds (kittiwakes)



Christine Ducamp: Lecturer
Chemical ecology
GC-MS, green chemistry
Insects, birds, fish, plants

Name, Position, Research Topics, Techniques, Species

Permanent staff



Jean-Baptiste Ferdy: Professor



Sarah Leclaire: Researcher
Olfaction, mate choice, microbiota
Chem. ecol., immuno., microbiology
Birds (e.g. Black-legged kittiwakes)



Sergine Ponsard: Professor
Speciation, host-parasite, plant-insect interactions, agroecosystems
Stable isotopes, genetic analyses, behavior, experimental approach
Lepidoptera, Hymenoptera



Gilles Espinasse: Technician
GC-MS, HPLC, Experimental prototype fabrication
Insects, birds, fish, plants



Jean-Louis Hemptinne: Professor
Predators, chemical ecology, behavior
Coccinellidae, aphididae



Alexandra Magro: Professor
Predator – prey relationships, invasion
Chemical ecology, field community studies
Coccinellidae, Hemiptera



Benoît Pujol: Researcher
Genetic inheritance, adapt. climate change
Quantitative genetics
Plants, roe deer, clownfish



Jean-François Garrigues: Technician
Experiments
Lab maintenance
Insects, plants, fish

Name, Position, Research Topics, Techniques, Species

Permanent staff



Felipe Ramon-Portugal: Study Engineer
GC-MS, HPLC
Insects, birds, fish, plants



Nathalie Dardenne: Technician
Agroecology and microbiology
Microbiology and molecular biology
Bacteria, insects

Non-permanent staff



Mathieu Latutrie: Study Engineer
Phenotypic plasticity, adaptation
Experimental approach, molecular biology
Plants (Antirrhinum, Populus, Pinus)

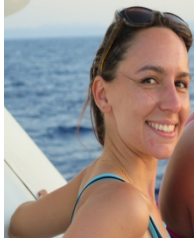


Sara Marin: Study Engineer
Quantitative genetics, adap. climate change
Experimental plant biology, molecular ecol.
Plants (Antirrhinum majus)



Nathalie Parthuisot: Study Engineer

Post-doctoral researchers



Océane Salles: Postdoc
Quantitative genetic, population dynamics, population genetic, marine ecology



Sabine Noebel: Postdoc
Non-genetic inheritance, social inform, mate choice
Behavioral tests
Fruit flies, mosquitofish, zebra fish



Delphine Gourcilleau: Postdoc
Epigenetic (DNA methylation), gene expression
Lab experiment, molecular biology, in vitro culture
Plants (poplar, antirrhinum...), Y chromosome (primates)



David Duneau: Postdoc
Host-parasite interactions, host sexual dimorphism
Experimental approach, functional genetic, molecular biology
Fruit flies, bacteria, daphnia



Arnaud Sentis: Postdoc
Global change, trophic interactions, phenotypic plasticity, epigenetic
Lab experiment, respirometry, modeling
Insects (terrestrial and aquatic)



Mathilde Mousset: Postdoc
Mating system, inbreeding depression, phenotypic plasticity, epigenetics
Experiments, genotyping
Arabidopsis lyrata, Noccaea caerulescens, Antirrhinum majus

Name, Position, Research Topics, *Techniques*, *Species*

Post-doctoral researchers



Laurane Winandy: Postdoc
Anti-predator behavior, maternal effect
Experimental approaches
Lizards, Newts



Isabel Winney: Postdoc
Genetic of life-history traits, personality,
extra-pair paternity, open science
Quantitative genetics, animal model
Birds, plants



Jordi Salmona: Postdoc
Environmental and Anthropogenic effects on wildlife
Population genetics, genomics and transcriptomics
Lizards and Lemurs



Caroline Thomson: Postdoc
Adaptation, demography, Natural selection
Field study, phenotypic selection estimates, Quantitative selection
Birds, plants

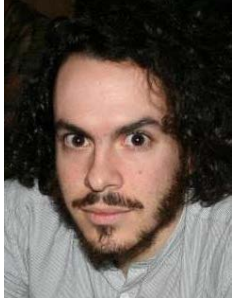
PhD Students



Paul Acker: PhD student
Coloniality, habitat selection in fragmented environments
Field monitoring
Birds (kittiwake)



Félix Pellerin: PhD student
Adap. climate change, habitat fragmentation, population dynamics
Modeling, semi-natural experiments
Lizards, protists



Maxime Pineaux: PhD student
Sexual selection, host-pathogens interactions, immunogenetic, behavioral ecology
Experiments and field monitoring
Black-legged kittiwakes



Marine Cambon: PhD student
Pathogen, microbiota, phenotypic switching
Metabarcoding, lab experiments
Insects, bacteria, nematodes



Aimeric Teyssier: PhD student
Gut microbiota and urbanisation
Population monitoring, NGS techniques
Birds (sparrows, tits)



Magdalena Monier
Mate-choice, non-genetic inheritance, neuronal networks.
Behavioral tests
Drosophila